



WHEELABRATOR

PARADE



MAY YOUR EVERY "WISH" COME TRUE THIS CHRISTMAS SEASON

Keeping costs down . . . Key to more business



High costs mean lost jobs.

Here are just a few examples of important jobs we didn't get for that reason. The Chevrolet Division of General Motors Corporation recently bought three competitive Continuous Tumblasts and a Monorail Cabinet. Earlier this year, an Ohio steelmaker bought a large electric furnace Dust Collector from another competitor.

In both instances, we had submitted sales proposals. And, in both cases, we lost the jobs . . . for only one reason . . . our prices were higher than those of our competitors.

Lost jobs like these mean lost money for our company . . . and lost money means fewer profits. Because of Profit-Sharing, you have a definite stake in this problem. If our company's profits decrease, so does the company's contribution to your Profit-Sharing account.

Profit, in fact, is basic to survival. If a company loses money, it can exist only so long as the profits saved from the past hold out. And if a company makes too little money, it can't afford new machinery, its costs increase, sales are lost to more up-to-date companies and its jobs decline.

Any job that is lost because of cost is almost invariably a strong indicator of weakness.

Historically, such problems, like small fires, have the habit of mushrooming into full scale conflagrations, if ignored or passed over lightly. Witness the demise of once-famous names such as Packard, Pierce-Arrow, Stutz, Dusenberg and a host of others.

Constant vigilance in this direction is paramount to continued success . . . and **you** are an important cog in our wheel of progress.

James F. Connaughton
President

VITAL VALUES
W
FOR INDUSTRY

WHEELABRATOR

PARADE

Vol. 24, No. 6 November-December, 1965

Editor — Merle D. Gisel

Published for
Employees of The Wheelabrator Corporation
Mishawaka, Indiana

ON OUR COVER

Paul and Alberta Kaufman, posing for the picture on our cover, dramatize the annual dilemma husbands and wives face at Christmas — whether to spend all the money buying a gift for one's spouse or to save a bit of it to buy for oneself something he or she has always wanted. Our special thanks to Paul and Alberta and to Gilbert's Men's Clothing and Sonneborn's Sport and Camera Shop, both of South Bend, for allowing us to use their window displays in our picture.

Wheelabrator Host at Chicago Press Conference

Wheelabrator was host to 40 writers and editors from industrial and general publications at an industrial air pollution control press briefing at the Union League Club of Chicago, October 8.

Representing Wheelabrator at the briefing were Francis W. Dunn, Assistant to the President; Kenneth E. Blessing, Vice President of Sales; F. John Pichard, Vice President of Marketing; Frank R. Culhane, Sales Manager, Dust and Fume Control Division; Robert L. Bump, Product Manager, Electrostatic Precipitators; A. E. Lenhard, Manager of Advertising and Sales Promotion and Robert E. Schalliol, Assistant Advertising Manager.

Our officials discussed with the writers and editors the increasing industrial air pollution problem and the equipment Wheelabrator is producing to help control it.

The hour-long briefing preceding lunch was conducted in as non-technical a manner as possible.

Guests received press kits including photographs and stories and were able to view and examine scale models of an electrostatic precipitator and a fabric-type dustube dust collector.

Wheelabrator officials remained after lunch to answer questions raised by the briefing.



Frank R. Culhane explains the principles of operation of the Wheelabrator Dustube Dust Collector to Dale Cotter, **South Bend Tribune** writer who attended the Chicago press briefing.

Our Image in the Community

Interviews with Mishawaka leaders

An aggressive, progressive industrial organization . . . a source of strength in the community . . . a business with a heart . . . a firm with a civic conscience . . . an exemplary labor-management relationship — This is Wheelabrator in the eyes of the community.

PARADE visited with a number of Mishawaka's civic, business, professional and religious leaders over the past few months and asked each what, in his opinion, was the nature of Wheelabrator Corporation's community image. Their responses, along with pictures taken during the interviews, are included on these pages.



MAYOR MARGARET PRICKETT

"A progressive industry"

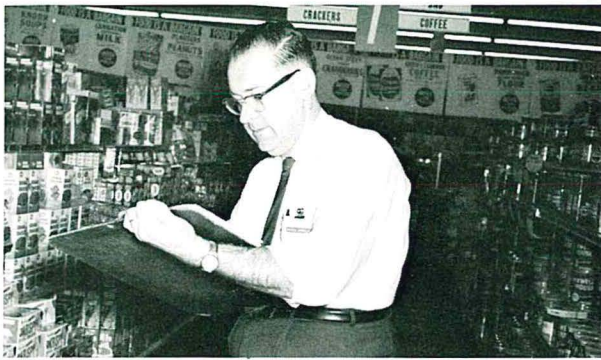
Mayor MARGARET PRICKETT views Wheelabrator as a great asset to Mishawaka. "Your firm is one of the most dynamic, progressive industries in the entire Michiana area," she said, adding that "both management and union leaders are to be commended for an exceptional history of labor, management relations." She also commented about the way Wheelabrator's civic-minded personnel participate in both government and civic activities.



ROBERT P. DOOLITTLE

"Community, industry interdependent"

A community like Mishawaka and an industrial organization like Wheelabrator are interdependent, in the opinion of local realtor ROBERT P. DOOLITTLE. He explained that "over the years Wheelabrator has contributed to the community welfare by providing steady employment for many people." "And," he added, "the entire community has been complimented by the decision of Wheelabrator executives to move the Balcrank, Inc. operations from Ohio to our city."



WILBUR DORNIFE

"Watched Wheelabrator grow"

WILBUR DORNIFE, Kroger Store Manager, commented that "As a native Mishawakan, I have been in an excellent position to watch Wheelabrator Corporation grow with the community. The community has greatly benefited by having Wheelabrator here. I have had many pleasant experiences associating with Wheelabrator folks who do business in Mishawaka."

JOHN W. SCHINDLER JR., Mishawaka attorney, remarked that Wheelabrator "has been a great asset to Mishawaka in three distinct ways: (1) It has provided a steady payroll at good rates; (2) The firm has come forward with leadership for many community enterprises and charitable solicitations; (3) It has helped put Mishawaka on the map both nationally and internationally."



MRS.
T. S. TORIAN

*"Firm has
enviable
record"*

"A community reflects the spirit and prosperity of its industrial plants," said MRS. T. S. TORIAN, community worker. She added that Wheelabrator's enviable record of employee cooperation, community participation and physical expansion has played an important role in Mishawaka's growth and well-being. I'm sure that in years to come we can continue to be proud of the many contributions the Wheelabrator Corporation and its employees have made and will continue to make in our community."



CHARLES SOENS

"Wonderful associations"

To CHARLES SOENS, co-owner of Soens Electric Co., Wheelabrator is a personal force. He remarked that during his 23 years in business in Mishawaka he has been closely associated with our firm and has, over the years, known personally many Wheelabrator employees. "All these associations have been truly wonderful," he said.



VINCENT MORASCHI

*"Good livelihood
for workers"*

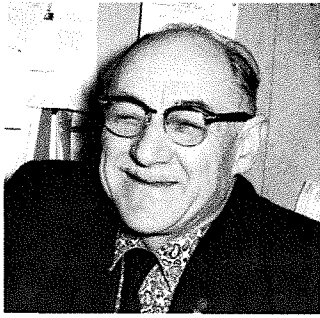
Speaking as an independent grocer, VINCENT MORASCHI, of Moraschi and Ferretti, lauded Wheelabrator's steady employment record which, in his words, "has made possible a good livelihood for many Mishawaka residents."



DR. JOHN
J. YOUNG

*"Strong
economic
force"*

DR. JOHN J. YOUNG, Superintendent of Schools, labeled our firm as "A strong economic force in the community." He said that from a personal acquaintance with Wheelabrator employees he knew the firm was a good employer. He added that "the entire school community is well-aware of the philanthropic work of the Wheelabrator Foundation, Inc., which has annually provided worthwhile scholarships to local high school graduates."



MORRIS SHAPIRO

"Good substantial firm"

"I know that my opinion of Wheelabrator is shared by a good many merchants," said MORRIS SHAPIRO, owner of the Mishawaka Paint and Wallpaper Co.

"We believe that the firm is a good substantial one, of which Mishawaka residents are proud . . . it's both a progressive and aggressive industrial organization."



BEN STAUFFACHER

"Institution with great future"

BEN STAUFFACHER is Secretary-Treasurer of the Downtown Mishawaka Association, Inc. His comments follow: "A business leaves its mark on every individual connected with it. It makes or destroys the men who operate it. It grows to immense proportions carrying upward those on whom it has smiled or it crashes to the ground, burying its servants beneath the wreckage. To be connected with and a part of a growing firm such as Wheelabrator Corporation is the good fortune of the members of the Downtown Mishawaka Association. For, the local firm is an institution with a great future."



DR. JOHN H. MEENGs

"Source of community strength"

"The great stability that Wheelabrator Corporation has enjoyed over the years is a great tribute to a fine company," in the words of DR. JOHN H. MEENGs, Pastor, First Presbyterian Church.

"This stability," he explained, "has been characterized by the steady employment rate throughout the years and the increasing amount of business that the firm has been doing." "In short," Dr. Meengs stated, "Wheelabrator has been for many years a great source of power and strength in the community."



MRS. JOHN WILL

"Meeting new trends"

MRS. JOHN WILL, of Will's Jewelry Store and chairman of the Princess Mishawaka Pageant, remarked that "all residents of Mishawaka need to be aware that our country is constantly

changing . . . people on the move, population growths and shifts and economic problems that arise." She said that "Wheelabrator and industries like it seem to be meeting these new trends with growth and planning." She added that "we business people certainly do appreciate all the facets of Wheelabrator's contribution to the community."



MSGR. C. A. SUELZER

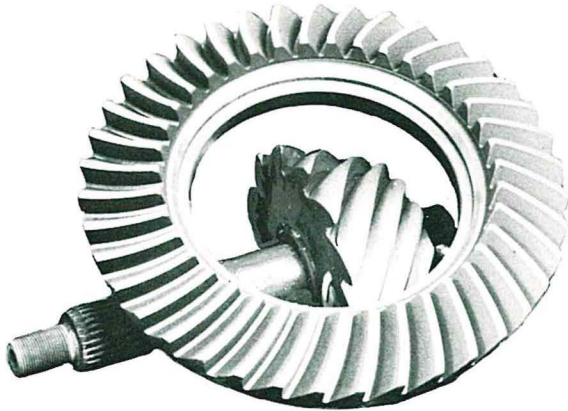
"Firm with a heart"

Humanitarianism was stressed by MSGR. C. A. SUELZER of Saint Joseph's Catholic Church. Noting that Wheelabrator employees in 1965 surpassed by 17 per cent their previous United Fund contribution, Msgr. Suelzer recalled that Wheelabrator has always taken an active role in community affairs. Among

the firm's humanitarian endeavors noted by Msgr. Suelzer were its summer hiring program for the area's college-bound youth and its scholarship program. Very concisely, he stated that "Wheelabrator is a firm with a heart."

Wheelabrator Puts Longer Life into Differential Gears

at FORD MOTOR COMPANY



Matched set of ring and pinion gears after shot peening in the Wheelabrator.

The Ford Motor Company's Sterling Chassis Parts Plant near Detroit, Michigan, has an impressive installation of Wheelabrator equipment . . . seven multi-tables used to shotpeen differential gears on all Ford and Mercury passenger cars.

The purpose of the shot peening is to lower the noise level and to increase the wear life of the gears.

Each of the machines at Ford has 10 revolving work tables and canpeen 1300 sets of ring and pinion gears and 16,800 side gears per shift.

Accelerated engineering tests at Ford have demonstrated that peening relieves stress and

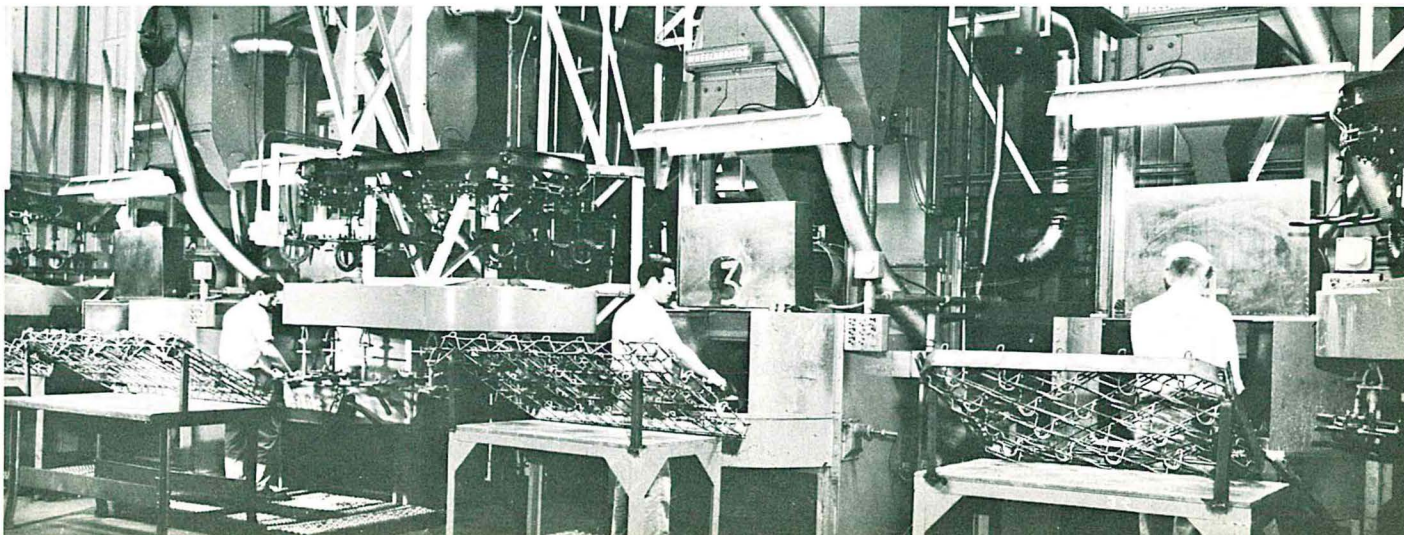
Four of the seven Wheelabrator Multi-Tables installed at the Chassis Parts Plant at Ford Motor Company for shot peening ring and pinion gears.



Operator loads five gears on spindle fixture on one of the work tables of the seven machines installed at Ford for shot peening.

significantly increases the fatigue life of differential gears. In these tests, peened gears showed at least 300 per cent improvement in fatigue life.

Ford has proved that Wheelabrator shot peening pays — in longer life and greater endurance for differential gears.



ersonal
e the
rding
d reached
ams last Ap
Coach O'Sh
ethe Alle
ur. ack is
e," Shea
cin rs ar

9.7 second
ason bega
Fra
a du
20.
doesn't
can
t rea
L. "It's so
ose

De-
ac-
ea,
st
sta
4. F
apol
fourth
223
During
len
wit
but

both in
yet to win
t y he
00 an
inals.
camp
00 a 9.8
reez at h
he only

AND



Evidence that Wheelabrator has grown over the years is seen in this picture taken of the general office staff in 1934. Of this group, four are still employed in our offices . . . L. L. Andrus is seated second from the right, Tom Hameline is standing at the left, Anna Sawyer is standing third from the right and Odelia Schaut is standing second from the right.



Jean Vergon, masquerading as a clock, at left, won first prize at the annual Halloween Party sponsored by the Juliana Club. Among the masked guests at the party were the five "creatures" in the picture at the right.





A recent visitor from Pennsylvania was David Logan, who began working as a salesman for Wheelabrator in 1912—53 years ago. While here, he took time out to give a few pointers to one of our newest salesmen, Phil Martin, who was being trained in the Demonstration Department at that time.

Panna Patel, from Bombay, India, and Erik Hansen, from Copenhagen, Denmark, checked the progress of our expansion program early in November. Panna, the daughter of J. V. Patel, Chairman and President of Indabrador Ltd., is working for six months in the Advertising Department. Erik is here for three months working as a trainee in the Accounting Department.



Even the littlest skaters had a good time at the Skating Party held October 20 for employees and their families under sponsorship of the Athletic Association.

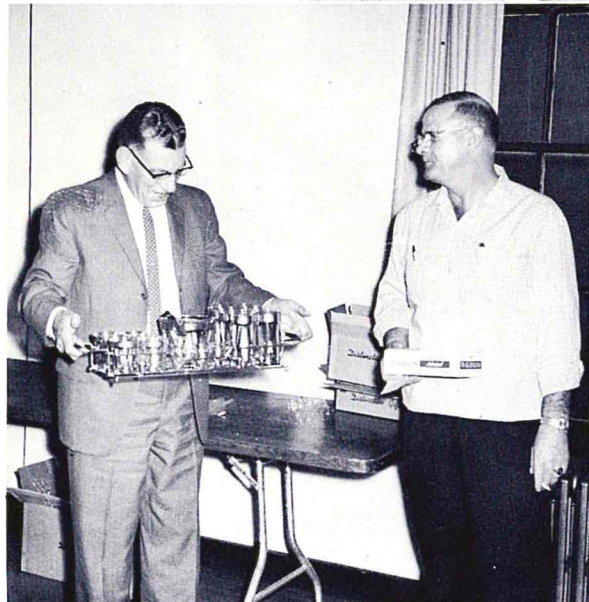


Thirty-five maintenance and operating supervisors from companies in Japan, Illinois, Ohio, Maine, Michigan, New York, Iowa, Indiana, Nebraska and Louisiana attended a Customer Service School October 25 and 26 at the plant.

NEWS AND VIEWS

CONTINUED

Our participation in the 1965 Metal Show in Detroit in October was a joint venture of the Blast and Lorco Divisions. It centered around the theme, "Idea Specialists for Solving Metal Finishing Problems."



Refreshments, cards and door prizes added up to a good time for all who attended the Athletic Association Stag on November 12 at the Broederenkring Club. At left, Harold Groh displays the prize he won. A foursome plays cards at the right.



Our exhibit at the Mining Show in October in Las Vegas featured both bag filter houses and electrostatic precipitators.

John G. Farabaugh

answers questions about

Increased Social Security costs and benefits



The social security amendment of 1965, voted by Congress in July, increased the benefits to be received by workers and their families upon retirement, disability or death. In order to pay for the increase in benefits, our company and its employees will start paying higher social security tax contributions beginning in January. So that you might better understand how the new law will affect your paycheck, we have interviewed John G. Farabaugh, Director of Industrial Relations. Following are the questions we asked and the answers he gave us:

Question: Why will the take-home pay of Wheelabrator employees be less next year than it is now?

Answer: A change in Federal law requires that more of your wages be withheld and turned over to the Federal Government to help pay the ever-increasing costs of the Social Security system. The increased deduction will start with the first pay period of 1966.

Question: What is the exact amount of the increase?

Answer: This year, 3 $\frac{5}{8}$ per cent of your wages (up to \$4,800), or a maximum of \$174, went for this purpose. With the first pay period of next year, the rate of tax will be 4 $\frac{1}{5}$ per cent of your wages (up to \$6,600), and may cost you a maximum of \$277.20 for the year.

Question: Does this increase in costs affect only the employees?

Answer: No. The company is also affected. As your employer, Wheelabrator Corporation is required to pay the same amount that you pay for this tax. This means that 8 $\frac{2}{5}$ per cent of our taxable payroll next year will go to the Federal Government to pay for Social Security and Medicare — a maximum of \$554.40 per employee.

Question: What about the future?

Answer: More increases will be coming in the years ahead. Statistics indicate that by 1987 the maximum employee tax will be \$372.90 compared with the maximum of 1966 tax of \$277.20. If benefits are increased further, the costs will be even higher. In the 12 year period, between 1937 and 1949, there was no increase in the Social Security tax. Sixteen increases have taken place, or are scheduled, between 1950 and 1987. So, judging from the past, you can expect the tax to increase even more than the scheduled maximum which is 12 times higher than it was in 1949.

Question: Why have these increases come so rapidly?

Answer: There are two reasons. First, a great number of people are now getting benefits which come to more than the taxes they and their employers paid into the fund. It is clear that, as some people get more out of this fund than they put in, others will receive less than they put into the fund. Second, Congress has changed the law many times to add more groups to the program, to make it easier to get benefits or to increase the benefits. The latter was done this year. Medicare was added in addition to an increase in benefits. Each change requires that both employees and employers pay more money.

Many departments move toward



November was a month marked by progress in our \$1.42 million expansion and renovation program. By the end of the month —

- The new Lorco customer demonstration laboratory was in operation.
- The Brookins line of service station hardware manufactured by Balcrank, Inc. was in production at our main plant.
- Research and Development facilities had been relocated in new quarters in the new R & D Building.
- The new customer demonstration laboratory for Blast equipment was being transferred from its old quarters to the new building.

Major areas to be completed include the office section in the R & D Building, the moving of the current Machine Shop into the new section adjoining our present Plant 1 and the putting into production of Balcrank's other basic product lines. These include lubrication pumps and assemblies, machine tool handle controls and industrial pumps for handling chemicals, paints, foods and semi-solid materials.

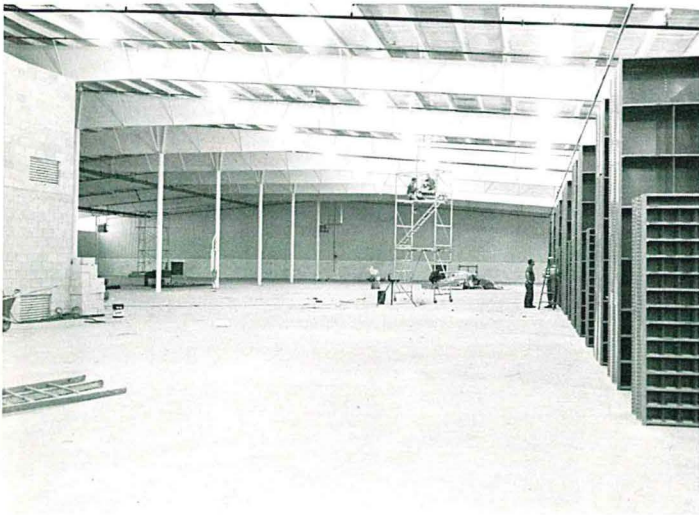
One of the first operations to relocate was the packaging of repair parts orders and their shipment. This group has relocated in the northeast section of the new area that adjoins Plant 1 to the south.

Our expansion program necessitated the relocation of our south guardhouse.

Here, Guard Warren Ackenhusen checks the credentials of a plant visitor. In the background is the recently-completed guardhouse which is just behind the new R & D Building.



completion of expansion program



The storage bins at the right mark the site of the new stockroom. The new, enlarged Machine Shop will be located in the wide expanse of space to the left of the picture.



Foremen of the Balcrank Brookins line watch the first products made in Mishawaka come off the production line late in November.

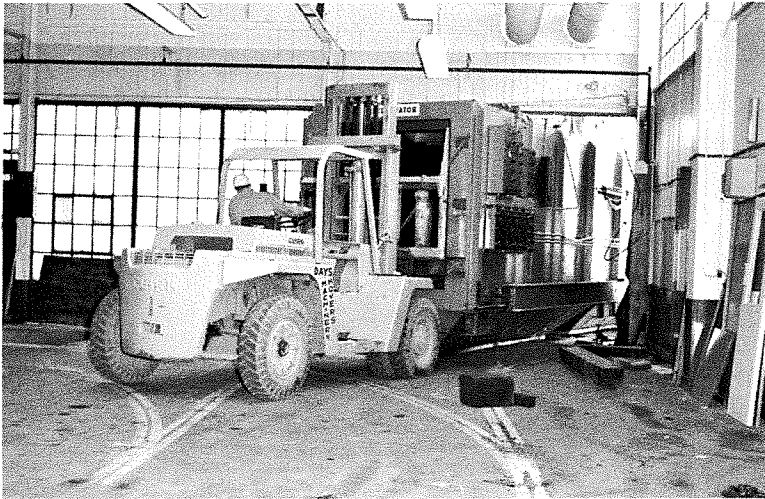


Under supervision of the Methods & Planning Department, workmen use a fork-lift truck to unload equipment brought here from the Cincinnati, Ohio, plant of Balcrank.



Balcrank foremen and Wheelabrator factory officials check equipment installed for production of the Balcrank Brookins line. From the left, are: Bob Klump, Brookins foreman; Bud Schilling, Balcrank production manager; Don J. Rumpler, Wheelabrator factory manager; Harold Rhodehamel, Balcrank supervisor of stores and Jim Fogle, assistant industrial engineer at Wheelabrator.

Part of the big move



The large blast cleaning room that had been a part of the former Demonstration Department laboratory was moved late in November to the new R & D Building. Above,

workmen are moving the main part of the cabinet out of the old laboratory through an opening made in the outside wall. The cabinet is seen, at left, on its way to the new building. The entire move was made with only one minor mishap . . . the cabinet came too close to a utility pole and put a scratch on the pole as shown in the picture below. Not bad, when you consider that the cabinet weighs 18 tons.



We knew him when



Charles Kwasny is Assistant Production Manager. He started his Wheelabrator career in 1939 as a receiving clerk in the stockroom.

From that job, he advanced to a number of other positions in the stockroom and the Production Control Department until he was promoted to his present position last year.

Kwasny is president of the Supervisor's Club and lives with his wife and three children at 1410 Tremont Drive, Mishawaka.



James P. Curtis was named Supervisor of Production and Inventory Control early this year.

A Wheelabrator employee since 1940, he has always worked in either the stockroom or Production Control Department.

He began as a receiving clerk in the stockroom and progressed to other jobs in that department before he was transferred in 1951 to Production Control to service orders for repair parts. He held that position until his recent promotion.

Curtis lives at 214 Manor Drive in Mishawaka with his wife and two daughters.



Girls in the Dust and Fume Engineering Department presented Frank Herbison with a cake on his birthday late in October.

PASSING PARADE



Foreman **George Dubois** is beginning to think there is an organized conspiracy against him to abandon his parking space. It seems that a number of Steel Shop personnel have been in on the plot. But George hasn't given up yet . . . **Virgil Personnett**, C-16 assembler, is the proud father of a son who recently won a national Jaycee award . . . **Wilbert Mitchell**, crane operator, is retiring in December. Wilbert came to Wheelabrator 21 years ago from the Gary steel mills where he had also operated cranes. He began work here as a crane operator, later trying other jobs and then returning to operate the crane at which he is an expert. Wilbert, who has a host of friends at Wheelabrator, is also interested in church work. He and his wife have adopted a son who is now eight years old . . . The last house was moved from the expansion area on November 18 and the new buildings are completed on the outside and are nearing completion inside . . . Lorco Division, C-16 and small parts assemblies have moved into our new Plant No. 4 on U.S. 20, formerly occupied by the Triangle Tool and Die Co.

Milferd Gardner, Steel Shop

After trying to feed a squirrel, **Jack Richardson** will be more careful in the future in regard to the kind of animal he feeds. Jack tried to feed a squirrel recently and the animal misjudged and took a bite of Jack's hand . . . **Tom Lewis** and his wife vacationed in Florida recently. They went deep sea fishing and guess who caught the biggest fish. You guessed it — Mrs. Lewis. What happened Tom? . . . Anyone interested in traveling west and taking a few short cuts should contact **Maynard Lester** who reportedly is an expert on this type of travel . . . **Bill Renfro** vacationed in Illinois, Wisconsin, Minnesota, North and South Dakota, Idaho, Wyoming, Washington, Oregon and California. He traveled 7,000 miles and saw 15 feet of snow in Wyoming . . . **Ralph Hensel** recently bowled a 257 game one Thursday night. But Ralph will readily admit that he didn't duplicate it on the following Thursday night . . . The Chippewa River at Black River Falls, Wisconsin, produces some very smart fish. If you don't think so ask either **Gail Pringle** or **Bill Koontz**

who reported some pretty wild experiences after returning from a trip there recently. **Walt Stegman**, Plant 2

Congratulations to **Rudy Destics** on his recent marriage to **Judith Kovas** of Norwalk, Connecticut. They traveled through the New England states on their honeymoon . . . A fishing rod and reel were presented to **Bert Waznik** at a retirement party held in October at the Lincoln Park Community House. He worked for **Charles DeCraene** in Dust & Fume . . . **Jim Evans** became a grandfather on October 16. His daughter **Margie Miller** gave birth to a ten pound girl, named **Sara Louise** . . . **Ray VanDeWalle** was surprised with a cake and the singing of "Happy Birthday" by his department recently . . . New arrival to the **Larry and Anne Eberly** family is a silver French poodle, named **Gina** . . . **Norma Crider's** 11-year-old daughter **Cathy** was recently chosen cheerleader at **McKinley** grade school . . . **Lucky Esther Harley** won \$30 in a football pool. She claims its her "mad money" for a Chicago shopping spree. **Pam Savadori**, Engineering

First, we are happy to have with us **Gayla Marzotto**, who is helping our Export Department; **Paul Martin** and **Diane Kalil**, who have joined the Sales Department and **Lorraine Nappier** who is now working in the Lorco Division . . . **David**, son of **George VanBruaene**, Parts Service, is a 2nd Lieutenant in the Air Force and was recently presented with his silver wings upon completion of jet pilot training. He is now in San Antonio, Texas, for his advanced training after which he will return to Big Spring, Texas, to be an instructor . . . One day we heard a great commotion in the Order Department and thought some-

thing really drastic had happened. When we found out, it was **Odelia Schaut** who had happened to look down at her feet and discover she had worn two different kinds of shoes. Luckily they were both the same color . . . **Laura Forbess**, Abrasive Division, got one of the best birthday presents yet!! It was a new "Barra-cuda" (by Plymouth) and a bright red one at that! She not only looks zippy behind the wheel, but she says it really has a lot of zip.

Eleanor Rea, Sales

A. I. Vanhoecke and his wife went to Pittsburgh to see the University of Notre Dame defeat the host team by a large score . . . **Charles VanBelleghem** who was the Foundry's daytime heat treat operator took a job as night foreman recently . . . **Mr. and Mrs. Richard Slocum** are the proud parents of a new son . . . Everyone would like to welcome all of our new men in the department. They comprise the new night shift in the Foundry . . . **Ed Stasiak** went on a deer hunting trip with some of his friends.

Russ Glassman, Foundry

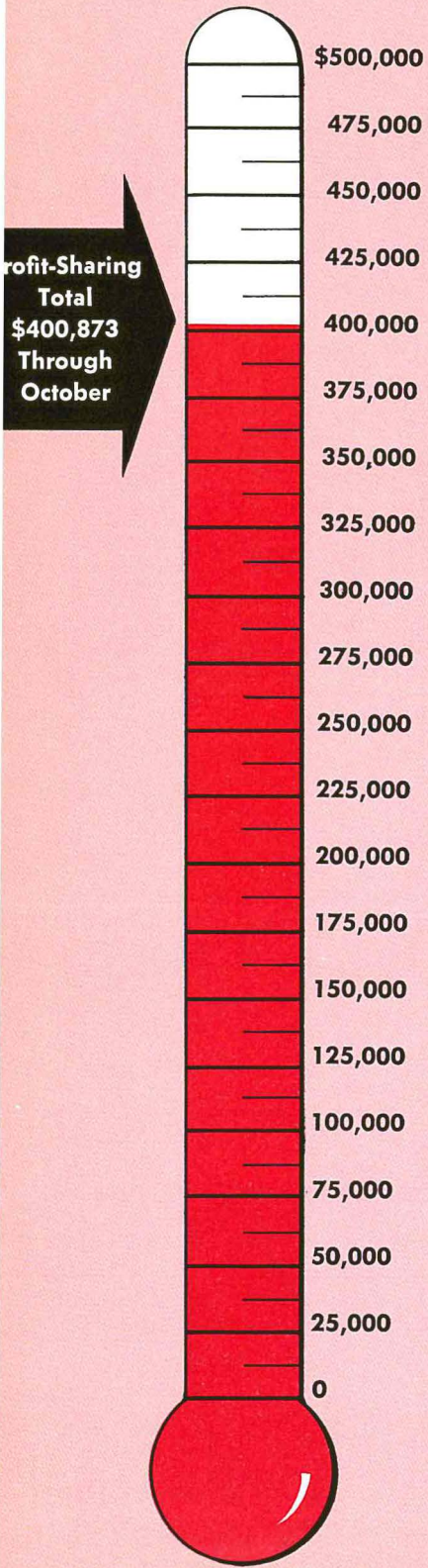
The **Larry Arndt's** have welcomed with delight their first baby girl, **Christine Marie**, into their family of three . . . We have been saddened by the untimely death of **Vern Valentine** who passed away on November 11th and of **Paul Kohler's** father on November 4th . . . The greater portion of the R & D Department has moved to our new building . . . It is nice to have **Clyde Snyder** back in our midst after being away during the month of October on vacation . . . The writer spent two wonderful weeks driving through all of the scenic New England States with a delightful friend from California. **Elsie Stefucza**, R & D

Willa Mae Parker, former Parade reporter, was given a gift by her co-workers when she left Wheelabrator in October.



PROFIT-SHARING

Watch the Fund Grow



Our Professional and Technical Affiliations



To remain competitive in today's changing world, a company needs to become aware of the fluctuations and evolutions within its own industry as well as those around it.

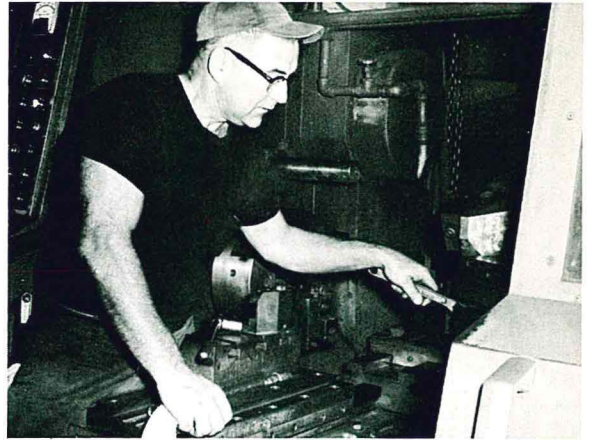
Keeping abreast of the latest thinking in sales, engineering, production, purchasing, management, accounting, marketing and other facets of a business, those

in a company must interchange ideas, trends and developments with others who have similar objectives.

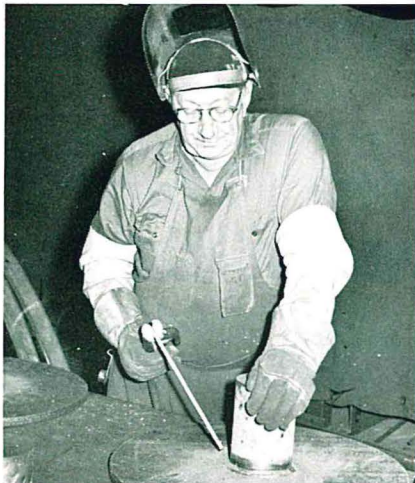
To do this, Wheelabrator and its personnel belong to some 50 important technical and trade groups. Following is a list of the organizations in which one or more Wheelabrator employees actively participate.

- Air Conditioning Association
- Air Pollution Control Association
- Alabama Professional Engineers and Land Surveyors
- American Association for Contamination Control
- American Chemical Society
- American Electroplater's Society
- American Foundrymen's Society
- American Gear Manufacturer's Association
- American Institute of Certified Public Accountants
- American Institute of Industrial Engineers
- American Institute of Mining, Metallurgical and Petroleum Engineers
- American Institute of Steel Construction, Inc.
- American Management Association
- American Ordnance Association
- American Production Inventory Control Society
- American Society for Metals
- American Society for Quality Control
- American Society of Mechanical Engineers
- American Society of Naval Engineers
- American Society of Tool and Manufacturing Engineers
- American Welding Society
- Association of Industrial Advertisers
- Association of Iron and Steel Engineers
- Automotive Parts Rebuilders Association
- Better Business Bureau of South Bend-Mishawaka
- Chamber of Commerce of South Bend-Mishawaka
- Chicago Rubber Group
- Chicago World Trade Club
- Council of Profit Sharing Industries
- Employee Relocation Real Estate Advisory Committee
- Engineers Clubs of St. Joseph Valley
- Fort Wayne Rubber and Plastic Group
- Foundry Educational Foundation
- Foundry Equipment Manufacturer's Association
- Indiana Association of Certified Public Accountants
- Indiana Association of Industrial Nurses
- Indiana Association of Purchasing Agents
- Indiana Conservation Council
- Indiana Manufacturer's Association
- Indiana State Chamber of Commerce
- Indiana Water Pollution Control Federation
- Industrial Gas Cleaning Institute
- Industrial Maintenance Institute
- Machinery and Allied Products Institute
- Michiana Club of Printing House Craftsmen
- Michiana Industrial Communicator's Council
- Michiana Parts and Service Association
- Mishawaka Credit Bureau
- National Association of Accountants
- National Association of Corrosion Engineers
- National Association of Credit Management
- National Association of Manufacturers
- National Association of Purchasing Agents
- National Barrel and Drum Association
- National Federation of Independent Business
- Navy League of the United States
- Newcomen Society in North America
- Pipe Line Contractor's Association
- Professional Engineers Society
- Purchasing Agents Association of South Bend, Inc.
- Refrigeration Service Engineers Society
- Society of Automotive Engineers
- Society of Experimental Stress Analysis
- South Bend Transportation Club
- Steel Plate Fabricator's Association
- The Wire Association, Inc.
- Water Pollution Control Federation

on the job



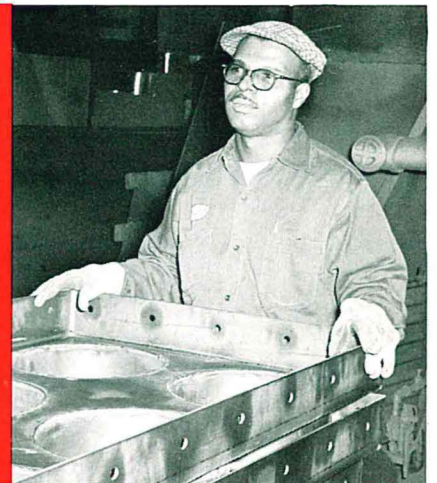
Casimir J. Truckowski is now chief maintenance man in the Machine Shop where he has worked since 1942. Prior to being maintenance man, he worked in assembly and operated a radial drill and a turret lathe.



Laverne W. Hess is an arc welder in the Steel Shop. He lives in Niles with his wife and five daughters. He lists as his hobbies hunting, fishing, camping and gardening.



Collecting miniature horses and constructing models are hobbies of **Clarence E. Frick** who operates a Besley grinder in the Foundry. Clarence joined Wheelabrator in 1946 and has always worked in the Foundry.



Anceford J. Hayes drives each day from Cassopolis, Michigan, to his job as a sheet metal worker in the Steel Shop. He has also worked as a material handler and likes to fish when he isn't working.



Harry C. Hixenbaugh is lead engineer in the Dust and Fume Control section. He started working at Wheelabrator as a mail boy in 1936 and has held various engineering positions during his 29 years here.



Since 1939, **Gilbert Bair** has worked in Steel Shop layout. He and his wife, who have one son, live in Osceola. Gilbert's hobbies are maintaining his home and fishing in Canada.

people AND events IN THE NEWS

Meetings

Kenneth E. Blessing, Vice President-Sales, and **Robert L. Orth**, Vice President-Engineering-New Products, attended the annual Foundry Equipment Manufacturer's Association meeting at White Sulphur Springs, West Virginia in October.

A. E. Lenhard and **R. E. Schalliol** traveled to Chicago in October for the Research Forum of the Industrial Advertising Research Institute at the Continen-

tal Plaza Hotel. Subject of the meeting was "Advertising Research on a Limited Budget."

Plant nurses **Betty Leyes** and **Jeanette Taylor** and **Ray S. Steele**, Personnel Manager, attended the Industrial Health Conference of the Indiana Association of Industrial Nurses in Indianapolis in October. Mrs. Leyes served on the educational committee for the conference and Mrs. Taylor on the program committee.

Receive Honors

James E. Donlan, Vice President-Controller, has been elected a member of the American Institute of Certified Public Accountants.

Ray S. Steele, Personnel Manager, has been named to the Management Advisory Council for the Indiana Association of Industrial Nurses.

Technical Seminars

John Straub, Chief Research Engineer, conducted seminars on shot peening at seven aircraft plants in the Los Angeles Region, September 27 to October 1. At each plant, he demonstrated how Wheelapeening can do a better job than airblasting. The sessions were held at Boeing Aircraft, Renton, Washington; Lockheed Aircraft, Burbank, Califor-

nia; Hughes Aircraft, Culver City, California; Northrup Aircraft, Hawthorne, California; Douglas Aircraft, Torrance, California; Rocketdyne, Canoga Park, California, and Boeing Aircraft, Los Angeles, California. Straub was assisted at the seminars by **John Phelan**, **R. L. Markee** and **Jerry Selig** of our Los Angeles Region.

Significant Sales

Two divisions of the General Motors Corporation have placed significant equipment orders with our Blast and Dust and Fume Control Divisions. Central Foundry Division has purchased five 34 cubic foot Super Tumblasts plus special Work Handling Systems for a new foundry being built in Defiance, Ohio.

The machines will clean nine types of nodular and malleable iron castings following heat treatment. The other order was placed by Chevrolet Division's Saginaw Nodular Iron Foundry. It was for an Ultra Filtration System, consisting of 26 units, to filter 100,000 cubic feet of atmospheric air per minute.

UF Drive a Success

Once again this year Wheelabrator Corporation employees increased the amount of money they gave to the United Fund's Crusade of Hope. This year's drive netted \$26,887 — a 17 per cent increase over last year's

contribution. Co-chairmen of the drive were **R. E. Schalliol** and **Robert Pherson**. They worked closely with **John G. Farabaugh**, Director of Industrial Relations and **Ray S. Steele**, Personnel Manager.

Promotions

L. Dale Reddricks has been promoted to Manager, Service and Erection in the Sales Department. In this position, he will be responsible for equipment from shipment through erection, to satisfactory operation as well as customer schools and service training. Reddricks has been a Mishawaka-based service engineer since 1955.

Harold Garman has been named Assistant to the Manager, Service and Erection. A veteran Wheelabrator employee of 29 years, Garman joined the firm as a receiving clerk in the stockroom in 1936. Shortly thereafter, he was transferred to the then-existent Experimental Department until 1945 when he was placed in charge of the Demonstration Department.

New Employees

Merle Thomas and **Arthur Manual, Jr.**, Fabrication; **Richard L. Mead**, Assembly; **Giorgio R. Cavourro**, Plant 2 Production; **Edmund Lewandowski**, Material Handling; **Joseph A. Broussard**, Plant Engineering; **David R. Wogaman** and **Sandra M. Litteral**, Data Processing; **Malinda S. Calvin**, **Emil Horvath**, **Gerald J. Leyden**,

Sadrudin H. Tejani and **Benjamin A. Fry**, Engineering; **David L. Heironimus** and **Mary L. Bland**, Purchasing; **Barbara A. Wallace** and **Thomas J. Lytle**, Sales; **Gene J. Sobiech**, **James T. Hullinger**, **Wayne L. Schlemmer**, Methods and Planning; **Jodean A. Daffron**, Office Services; **Robert H. Peffley**, Operations.

Anniversaries

30 Years

John J. VanBellegem...Steel Shop
Andrew L. Federnok...Engineering

25 Years

Francis W. Geist.....Steel Shop
Dale L. Snyder.....Steel Shop
Russell L. Wade.....M&P
Charles P. Bultinck.....Engineering

20 Years

George F. Partridge..Plant Engr'ing

15 Years

Salem F. Hopper.....Steel Shop
Charles E. McConahay...Stockroom
George Roy.....Steel Shop
Wilbur C. Boyer.....Steel Shop
Edward D. Conner.....Shipping
Edward F. Schlabach.....Shipping
Calvin R. Myers.....Steel Shop
Willis G. Myers.....Steel Shop

Robert D. Lightner.....Stockroom
Robert C. Wood...Plant Engineering

10 Years

Harry D. Cooley.....Steel Shop
Ted T. Banacka.....Steel Shop
Wilbur B. Sawdon.....Steel Shop
Roy G. Carnal.....Plant 2
William J. Ciesielski.....Stockroom
David N. Toliver.....Plant 2
Charles E. Richhart.....Steel Shop
Ray E. Lidgard.....Steel Shop
Jack N. Russell.....Plant 2
Henry VandeWalle.....Steel Shop
Firmin A. Adams.....Stockroom
Roy Chevie, Jr......Plant 2
Roy R. Ward.....Machine Shop
Paul VandenAvyle..Plant Engr'ing
Everett L. Richardson.....Steel Shop
Eugene H. Sanders.....Steel Shop
Wayne C. Holderead.....Steel Shop
Ray B. Spice.....Steel Shop
L. Stewart Whitney.....M&P

Retirements

Philip Laureys...Plant Engineering
Bert S. Waznik.....Engineering

Willard A. Spears.....Assembly

Fellow maintenancemen gave Philip Laureys a watch when he retired in October.

Willard Spears was presented with a new rod and reel when he retired from the Steel Shop in October.

Dust and Fume Engineering personnel gathered around Bert Waznik's drawing board before Bert's retirement in October.



\$

Why Struggle With Unpaid Bills?

PAY OFF EVERYTHING YOU OWE!

\$

Advertisements like the above have enticed numerous people who are seriously in debt to contact second mortgage brokers who claim to offer an easy way out of their financial troubles.

Although most lending institutions are governed by laws for the protection of the public, these second mortgage "brokers" are exempt from any regulatory authority, according to our State Banking Department. This means that the "Broker" can charge any fee he wants to in arranging the loan.

Home owners seem to be confused as to the amount of "interest" being charged on their loan. What they don't seem to understand is that although they are being charged interest, they are also being charged various service fees; i.e. ap-

praisal fee, attorney's fee, application fee, broker's fee, etc., *none of which is refundable* or pro-rated if the loan is paid off in advance.

All home owners who are interested in a second mortgage loan should carefully consider not only the amount of the monthly payment but the number of months. Most people fail to multiply the payments by the number of months the contract was supposed to run. When they do, they are quite chagrined to learn the total amount of "interest" and "service fees" they are paying.

For example: One home owner borrowed \$1200. There were 48 payments to be made at \$47.63 per month or a total pay-back of \$2,286.24, a difference of \$1,086.24

Meet the Field



JACK HANSEN

Jack Hansen is a field engineer in the Chicago Region. He makes his home in Racine, Wisconsin. His sales territory is part of Wisconsin and Michigan.

A metallurgical engineering graduate of the University of Wisconsin, Jack served in the Army Air Corps during World War II in the weather service.

Professionally he belongs to the American Society for Metals and the American Foundrymen's Society. He is also active in the Meadowbrook Town & County Club in Racine.



WALT SCHLEGEL

Walt Schlegel is a field engineer in the Detroit Region. He has been a member of Wheelabrator's field sales force since 1957 when he joined the firm as an abrasive engineer.

A Mishawaka native, Walt lives with his family in Rochester, Michigan. He attended Miami University in Oxford, Ohio and Purdue University where he studied engineering.

He is a member of the American Foundrymen's Society and the Presbyterian Church.